



## Coronavirus (COVID-19) Response and Support Hub - Intel

### Coronavirus (COVID-19) Response and Support Hub - Intel

# MEETING THE CHALLENGE OF COVID-19

The world faces an enormous challenge in fighting COVID-19. Behind it all, Intel is committed to accelerating access to technology that can combat the current pandemic and enable scientific discovery that better prepares society for future crises.<sup>1</sup>

## MEETING THE CHALLENGE OF COVID-19

The world faces an enormous challenge in fighting COVID-19. Behind it all, Intel is committed to accelerating access to technology that can combat the current pandemic and enable scientific discovery that better prepares society for future crises.<sup>1</sup>

[Latest Update](#) [Community Support](#) [Focus Areas](#)

### What's Inside Has Never Mattered More

Behind the front lines. Behind the late nights. Behind the resolve. Behind it all, what's inside has never mattered more.





## A Message from Intel CEO Bob Swan

**To our valued customers and partners,<sup>2</sup>**

I am reaching out to you to confirm our strong commitment to you during the ongoing coronavirus situation. While this remains a developing situation, Intel factories around the world continue to operate on a relatively normal basis. We are here for you.

Ensuring the safety and well-being of our employees, service partners and communities continues to be our number one commitment. At the same time, we recognize that the technology industry plays in the world is more essential now than it has ever been.

[Continue reading](#)

## LATEST UPDATE

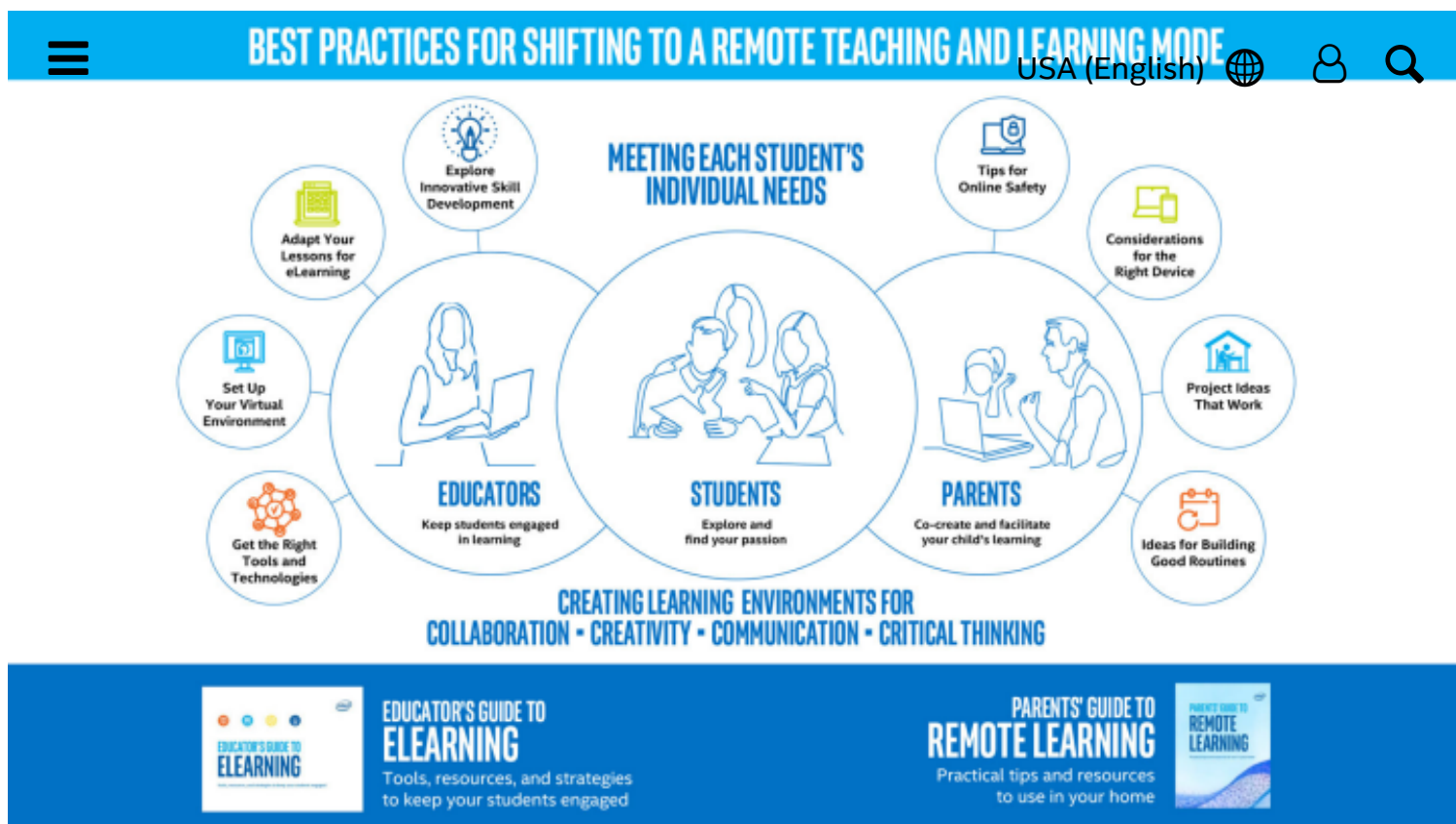
### Intel Commits \$50 Million with Pandemic Response Technology Initiative to Combat Coronavirus

In addition to \$10 million in donations for global COVID-19 relief efforts, Intel is pledging \$50 million in a pandemic response technology initiative to combat the coronavirus through accelerating access to technology at the point of patient care, speeding scientific research and ensuring access to online learning for students and teachers.

[Continue reading](#)







## Learning Guides for Educators and Parents

Best practices for shifting to a remote teaching and learning mode.

[Read more](#)

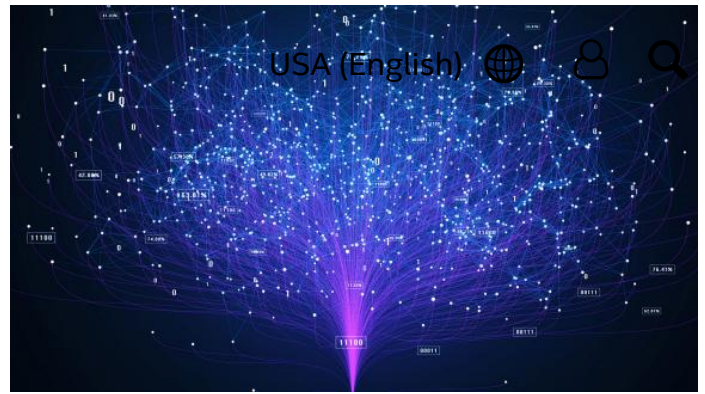
## Community Support



## Donations for Communities Around the World

The Intel Foundation is providing up to \$6 million in donations and employee donation matching to focus on food security, providing shelter and medical equipment, and support for small businesses.

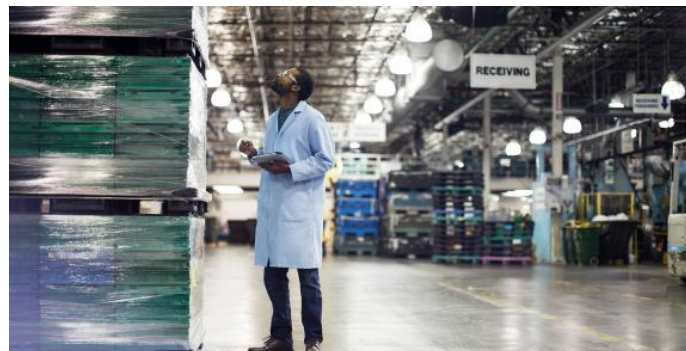
[Read more](#)



## Helping Combat COVID-19 with AI

Our partner, Huiying Medical, is developing a solution that employs AI technology to use CT scans to detect coronavirus infections.

[Read more](#)





## Supplying Critical Resources

USA (English)



Intel will source and donate more than 1 million items of personal protective equipment – masks, gloves and other gear – to healthcare workers.

[Read more](#)

# FOCUS AREAS

Responding to COVID-19 takes a coordinated effort to protect the health and well-being of employees while keeping the business running for our customers and supporting the communities we operate in.

## Protecting Employees

### Protecting Employees

Ensuring the safety and well-being of our employees, service partners, and the Intel community around the world is paramount. We're also actively supporting the need to help others in our communities and beyond.



## Community Support





## Community Support

Leveraging the Intel Foundation to provide local community and philanthropic relief in health and safety, education, community development and economic support through cash assistance from employee donations and matching funds.

## Governments/NGOs

### Governments/NGOs

Working with government, business and NGOs around the world to provide relief where it is most needed—including providing personal protective equipment for those on the front lines and technology assistance to those in the greatest need.



## Innovation





## Innovation

Supporting our partners as they develop new technology solutions for telemedicine, scientific research, and critical care delivery around the world. We're working to help speed the testing, diagnosis, and treatment of coronavirus.

# INTEL'S RESPONSE TO COVID-19 CRISIS FOR PARTNERS




We're here for you!

[Learn more](#)

---

Product and Performance Information

<sup>1</sup> Intel does not make or sell end user products intended to diagnose, treat or cure Covid 19. However, Intel is prioritizing efforts to support many original equipment manufacturers and others whose products are intended for this purpose. Nothing in this material is intended to recommend any particular diagnostic, treatment or cure for Covid 19.

USA (English)   

<sup>2</sup> Forward-Looking Statements: This letter includes forward-looking statements based on expectations as of March 18, 2020, which are subject to many risks and uncertainties that could cause actual results to differ materially from those anticipated, including risks related to the outbreak of COVID-19, which could materially adversely affect our financial condition and results of operations. The extent of the impact of COVID-19 will depend on future developments, which are highly uncertain and cannot be predicted, including, but not limited to, the duration and spread of the outbreak, its severity, the actions to contain COVID-19 or treat its impact, and how quickly and to what extent normal economic and operating conditions can resume. Additional important factors that could cause actual results to differ materially are set forth in Intel's Q4 2019 earnings release and our most recent reports on Forms 10-K and 10-Q, available at [intc.com](https://www.intel.com).

## Company Information

### Our Commitment

### Communities

### Investor Relations

### Contact Us

### Newsroom

### Jobs



© Intel Corporation

[Terms of Use](#)

[\\*Trademarks](#)

[Privacy](#)

[Cookies](#)

[Supply Chain Transparency](#)



Site Map

USA (English)   